



Products:

- Composite Hose
- Metall Hose
- Bellows, Compensators
- Swivel Joints



Composite Hose

Very flexible and easy to handle hoses for trucks, ships, railroad cars and industrial applications. Available in various designs for handling chemicals, petroleum products, liquefied gases, food, asphalt, abrasive media and others. Dimensions DN 15 - DN 250. Temperature from -200 ° C - + 300 ° C. Always supplied with pressed fittings and certified. Certified (CE marked) according to PED where required.

Metall Hose, Bellows and Compensators

Metal hoses for industrial applications with high pressure / temperature conditions. Hydraulically or mechanically shaped tubes. Comes with welded connections. Certified according to PED where required. Wound metal hose for exhaust systems on trucks and forklifts. Bellows and expansion joints to accommodate movement in piping systems.



Swivel Joints

Swivels can be used anywhere where you need to transfer liquid or gaseous media between two points that move in relation to each other. Swivels can move 360 degrees and is completely maintenance free. Our swivels are available with single or double ball races and manufactured in carbon steel or stainless steel. Swivels can handle large torque and can be combined to handle many simultaneous movements, see some examples below:



POSTADDRESS

MAILADDRESS

AB TERGO
Box 5
131 06 NACKA
SWEDEN

PRODUKTION & LAGER

PRODUCTION & WHAREHOUSE

AB TERGO PRODUKTION
PL 20991 , Häradsvägen 231
HÄRADSBYGDEN
793 50 LEKSAND
SWEDEN

TELEFON **08-447 55 90**

INTERNATIONAL TEL +468 447 55 90

TELEFAX **08-604 89 00**

INTERNATIONAL FAX +468 604 89 00

E-post info@tergo.se

E-mail info@tergo.se

Internet: <http://www.tergo.se>

Products: Pumps



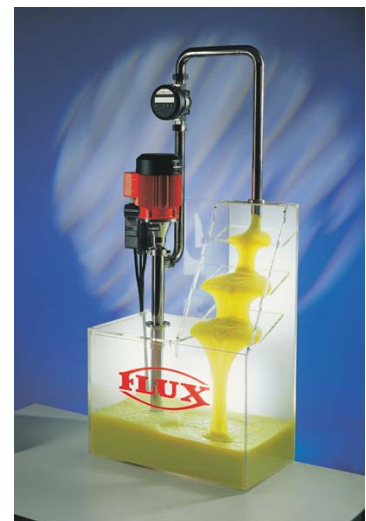
Barell Pumps Centrifugal Immersion Pumps Diaphragm Pumps

Elektriska Electric and air operated drum pumps for pumping of all fluids. The most complete program of pumps in aluminum, stainless steel, polypropylene and PVDF. Special pumps for highly viscous media, mixing and pumps that drain the barell without spill.

Single-phase or three-phase motors, even Ex, as well as compressed air motors. Ex - & pneumatic motors according to ATEX 100a.

Centrifugal Immersion Pumps in SS, PP and PVDF with flow rates up to 75 m³/h. Lengths from 300 mm to 4000 mm.

Air-operated diaphragm pumps in aluminum, stainless steel, cast iron, polypropylene, acetal and PVDF. Sizes from DN 06 to DN 80. Flow rate from 17 to 1040 l / min.



POSTADDRESS

MAILADDRESS

AB TERGO
Box 5
131 06 NACKA
SWEDEN

PRODUKTION & LAGER

PRODUCTION & WHAREHOUSE

AB TERGO PRODUKTION
PL 20991 , Håradsvägen 231
HÄRADSBYGDEN
793 50 LEKSAND
SWEDEN

TELEFON 08-447 55 90

INTERNATIONAL TEL +468 447 55 90

TELEFAX 08-604 89 00

INTERNATIONAL FAX +468 604 89 00

E-post info@tergo.se

E-mail info@tergo.se

Internet: <http://www.tergo.se>

Flow Meters

For measuring and dosing of chemicals. For system pressure up to 55 bar. Manufactured in polypropylene, PTFE, aluminum and stainless steel. For flow rates from 1 l/h up to 400 l/min. Accuracy down to $\pm 0.5\%$. Can be programmed for 10 different dosage volumes and calibrated for 10 different liquids.

Design for installation in piping or connection to the pump. Ex-proof version.



Agitators/ Mixers

With three-phase motor capacity up to 750 m³ / h, with three-phase AC motor capacity up to 2800 m³ / h. Shaft length up to 3000 mm. Shafts in stainless steel, PE - or PVDF-coated steel. Mixing blade in PP or PVDF.



POSTADDRESS

MAILADDRESS

AB TERGO
Box 5
131 06 NACKA
SWEDEN

PRODUKTION & LAGER

PRODUCTION & WHAREHOUSE

AB TERGO PRODUKTION
PL 20991 , Håradsvägen 231
HÅRADSBYGDEN
793 50 LEKSAND
SWEDEN

TELEFON **08-447 55 90**

INTERNATIONAL TEL +468 447 55 90

TELEFAX **08-604 89 00**

INTERNATIONAL FAX +468 604 89 00

E-post **info@tergo.se**

E-mail **info@tergo.se**

Internet: **http://www.tergo.se**

AB Tergo

Products:

Industrial Hose
Hose Fittings
Loading Arms



Industrial Hose

In synthetic rubber and plastics. Hoses for petrol, oils, water, welding, gas, compressed air, steam, chemicals etc. Available in bulk or in finished lengths with fitted connectors.

Hose Fittings

Clamping couplings, quick couplings, adapters, nozzles and drip free couplings in aluminum, bronze, stainless steel and plastic. Press fittings, hose clamps, etc.. Couplings with flanges to ASA or DIN, pipe threads and metric threads. Special fittings, valves and safety equipment.



Loading Arms

We develop, design and build loading arms for various applications such as loading / unloading of tank trucks and rail cars with gaseous or liquid products. The picture to the left shows a loading arm where aviation fuel is being unloaded from railway wagons for transportation by pipeline to Arlanda airport.



The picture to the left shows a loading arm where aviation fuel is being unloaded from railway wagons for transportation by pipeline to Arlanda airport.

We manufacture three types of Loading Arms:

Loading Arms Petroleum - for ergonomic loading and unloading of rail wagons and road tankers carrying petroleum products

Loading Arms Food - for ergonomic loading and unloading of rail wagons and road tankers for hygienic products

Loading Arms Chemicals - for ergonomic loading and unloading of

railway wagons and trucks carrying various chemicals including gases.

POSTADDRESS

MAILADDRESS

AB TERGO
Box 5
131 06 NACKA
SWEDEN

PRODUKTION & LAGER

PRODUCTION & WHAREHOUSE

AB TERGO PRODUKTION
PL 20991 , Håradsvägen 231
HÄRADSBYGDEN
793 50 LEKSAND
SWEDEN

TELEFON 08-447 55 90

INTERNATIONAL TEL +468 447 55 90

TELEFAX 08-604 89 00

INTERNATIONAL FAX +468 604 89 00

E-post info@tergo.se

E-mail info@tergo.se

Internet: <http://www.tergo.se>

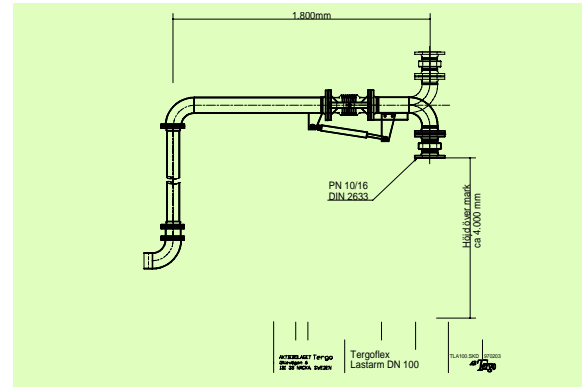


Products: Designs Capacity/Service Quality/Certification

Designs

We design and build a range of proprietary products, including Tergoflex loading arm, balanced swing arm for loading of trucks / wagons and connection systems for vapor recovery lines.

Products developed to improve the working environment for the operator by reducing the risk of musculoskeletal injury due to heavy lifting.



Capacity/ Service

In order to offer our customers a fast and efficient service, we keep a large stock of hoses, pumps and hose couplings. A hose must sometimes be replaced in just a few hours.

Quality/ Certification

All assembled hoses from our production are tested before delivery to the customer. Upon request a certificate is issued before delivery in which we checked and approved a number of customer quality demands. For some hoses, regular tests are carried out, often at the customers, before the new certificate is issued. In this way a very high security can be maintained when handling aggressive and hazardous products. We also engage an authorized audit company for third-party inspection and product certification according to PED or SÄIFS.

AB Tergo		PROVTRYCKNINGSCERTIFIKAT TEST CERTIFICATE																																																									
Certifikat / Certificate nr:		exempel 2013																																																									
Anläggning/Hamn	Site/Ship/Port	Testkund	Tergoflex																																																								
Slangfabrikat	Hose Manufacturer	Kompositstyp	EXEMPEL																																																								
Slangtyp	Hosetype	Tillverkningsår	2010																																																								
Kopplingsår	End Fittings	Lösa flänsar St DN 200 PN 10	Pressad hyllsa St																																																								
Slangen lagren i bruk	Date of 1st use	Arbetstryck	0,5-1,0 Mpa																																																								
Slangdimension	Hose Dimension	Sprängtryck	>6,0 Mpa																																																								
Slangnummer	Hose ID number	Resultat av provtryckning den:	20121020																																																								
Provtvåk	Test Pressure	Result of Pressure test, Date	20121020																																																								
Arbetstryck	Working Pressure	Godkänd:	X																																																								
Sprängtryck	Burst Pressure	Ej godkänd:																																																									
Provmedium	Test Medium	Vatten/Water	Utfört av/ Tested by: Sign: KA, RW, HN																																																								
Uppmärkning av slang i sex delar Hose length measured in six parts		Anmärningar/ Remarks: Liten vasskada vid L5 Liten skada ytterskikt vid L3 Nötningskador vid L1 & L2 Märkt: PT 20121020 Certifikat 2011 = x																																																									
<table border="1"> <tr> <th>Mätvärden</th> <th>Measurements</th> <th colspan="2">Jordningskontroll: Electron continuity</th> </tr> <tr> <td>L5¹</td> <td>2,400</td> <td>Ledande</td> <td>Continous</td> </tr> <tr> <td>L3²</td> <td>2,400</td> <td>Jä/Yes</td> <td>X</td> </tr> <tr> <td>L1³</td> <td>2,470</td> <td>Nej/No</td> <td></td> </tr> <tr> <td>L2⁴</td> <td>2,465</td> <td colspan="2">Anmärkning/Remarks:</td> </tr> <tr> <td>L4⁵</td> <td>2,480</td> <td colspan="2">5 Ω</td> </tr> <tr> <td>L6⁶</td> <td>2,414</td> <td colspan="2"></td> </tr> </table>		Mätvärden	Measurements	Jordningskontroll: Electron continuity		L5 ¹	2,400	Ledande	Continous	L3 ²	2,400	Jä/Yes	X	L1 ³	2,470	Nej/No		L2 ⁴	2,465	Anmärkning/Remarks:		L4 ⁵	2,480	5 Ω		L6 ⁶	2,414			<table border="1"> <tr> <th>Provningsresultat</th> <th>Test Results</th> <th colspan="2">Villkor för godkänd:</th> </tr> <tr> <td>0x1</td> <td>0x3</td> <td colspan="2">Conditions for approval:</td> </tr> <tr> <td>1x1</td> <td>1x2</td> <td>Kompositstyp</td> <td>KK 1.15</td> </tr> <tr> <td>2x1</td> <td>2x2</td> <td>Composite Hose</td> <td>KK 1.10</td> </tr> <tr> <td>3x1</td> <td>3x2</td> <td>Ledande</td> <td>KK 1.025</td> </tr> <tr> <td>4x1</td> <td>4x2</td> <td>Rubber Hose</td> <td>KK 1.02</td> </tr> <tr> <td>5x1</td> <td>5x2</td> <td>Metall Hose</td> <td>KK 1.01</td> </tr> </table>		Provningsresultat	Test Results	Villkor för godkänd:		0x1	0x3	Conditions for approval:		1x1	1x2	Kompositstyp	KK 1.15	2x1	2x2	Composite Hose	KK 1.10	3x1	3x2	Ledande	KK 1.025	4x1	4x2	Rubber Hose	KK 1.02	5x1	5x2	Metall Hose	KK 1.01
Mätvärden	Measurements	Jordningskontroll: Electron continuity																																																									
L5 ¹	2,400	Ledande	Continous																																																								
L3 ²	2,400	Jä/Yes	X																																																								
L1 ³	2,470	Nej/No																																																									
L2 ⁴	2,465	Anmärkning/Remarks:																																																									
L4 ⁵	2,480	5 Ω																																																									
L6 ⁶	2,414																																																										
Provningsresultat	Test Results	Villkor för godkänd:																																																									
0x1	0x3	Conditions for approval:																																																									
1x1	1x2	Kompositstyp	KK 1.15																																																								
2x1	2x2	Composite Hose	KK 1.10																																																								
3x1	3x2	Ledande	KK 1.025																																																								
4x1	4x2	Rubber Hose	KK 1.02																																																								
5x1	5x2	Metall Hose	KK 1.01																																																								
Nacka den 20121021 N Namnteckning N Namnförtydligande		PRODUKTION & LAGER PRODUCTION & WHAREHOUSE AB TERGO PRODUKTION PL 20991, Häradsvägen 231 HÄRADSBYGDEN 793 50 LEKSAND SWEDEN																																																									
POSTADRESS MAILADDRESS AB TERGO Box 5 131 06 NACKA SWEDEN		TELEFON 08-447 55 90 INTERNATIONAL TEL +468 447 55 90 TELEFAX 08-604 89 00 INTERNATIONAL FAX +468 604 89 00 E-post info@tergo.se E-mail info@tergo.se Internet: http://www.tergo.se																																																									

POSTADRESS

MAILADDRESS

AB TERGO
Box 5
131 06 NACKA
SWEDEN

PRODUKTION & LAGER

PRODUCTION & WHAREHOUSE

AB TERGO PRODUKTION
PL 20991, Häradsvägen 231
HÄRADSBYGDEN
793 50 LEKSAND
SWEDEN

TELEFON **08-447 55 90**

INTERNATIONAL TEL +468 447 55 90

TELEFAX **08-604 89 00**

INTERNATIONAL FAX +468 604 89 00

E-post info@tergo.se

E-mail info@tergo.se

Internet: <http://www.tergo.se>